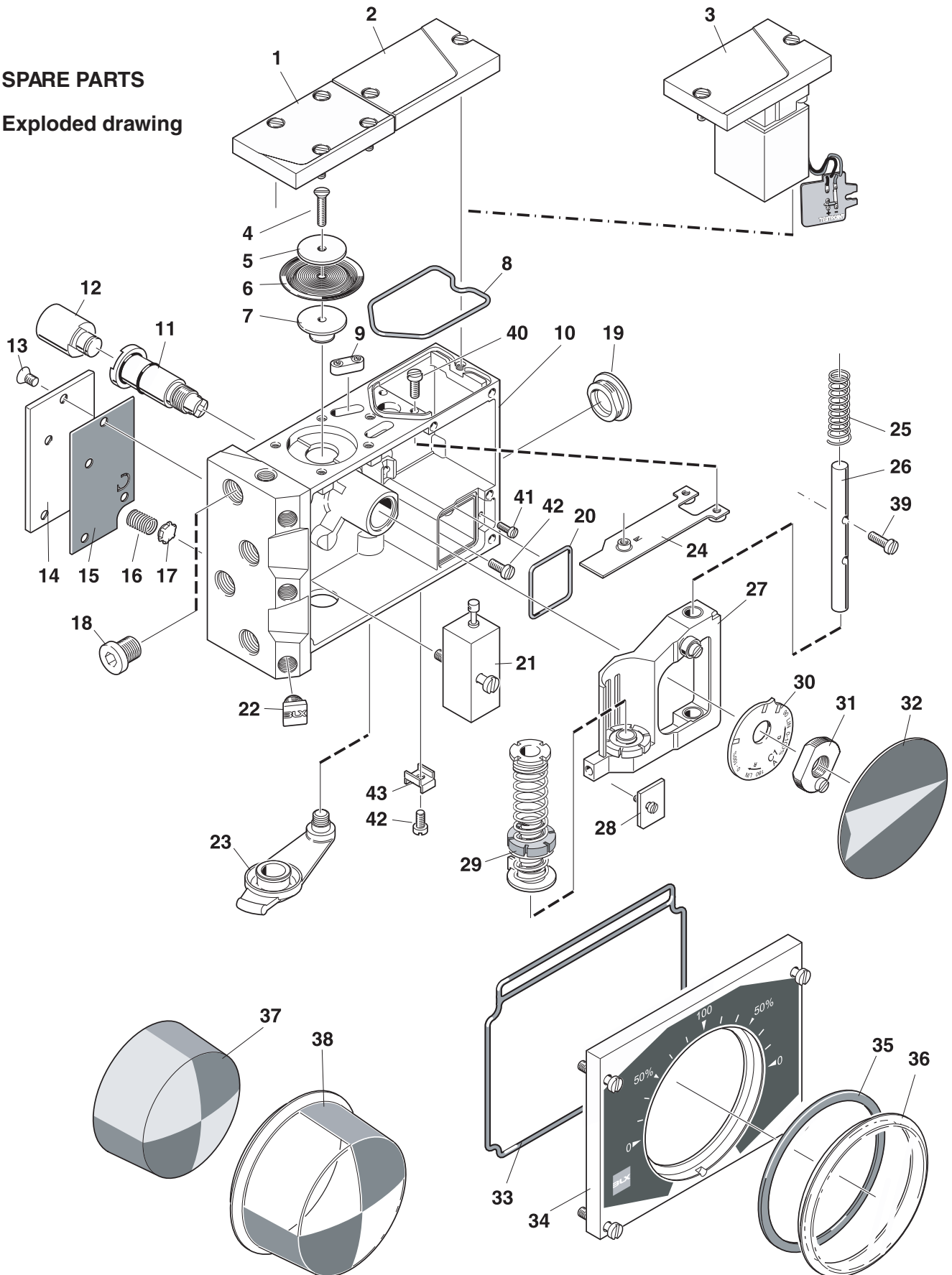


**SPARE PARTS**  
Exploded drawing





# V100 Positioner

## Spare parts list

| Item | Description                            | Part no | Qty            |
|------|----------------------------------------|---------|----------------|
| 1    | Membrane cover .....                   | 10066   | 1              |
|      | - Screw MCS 5x14-5 SS .....            |         | 4              |
|      | - Mylar washer .....                   | 10095   | 4              |
|      | - O-ring ø 5x2 NBR .....               |         | 1              |
| 2    | Cover plate .....                      | 10061   | 1 (V100P only) |
|      | - Screw MCS 5x14-5 SS .....            |         | 1              |
|      | - Screw MCS 5x12-5 SS .....            |         | 1              |
|      | - Mylar washer .....                   | 10095   | 2              |
| 3    | I/P-converter EA1 .....                |         | 1 (V100E only) |
|      | - Connection card .....                | 10012   | 1              |
|      | - Screw MCS 5x14-5 SS .....            |         | 1              |
|      | - Screw MCS 5x12-5 SS .....            |         | 1              |
|      | - Mylar washer .....                   | 10095   | 2              |
| 4    | Screw MKFS 4x14 SS .....               |         | 1              |
| 5    | Membrane washer .....                  | 10019   | 1              |
| 6    | Membrane .....                         | 10035   | 1              |
| 7    | Membrane piston .....                  | 10018   | 1              |
| 8    | O-ring ø54x2.5 NBR .....               |         | 1              |
| 9    | Filter cap .....                       | 20030   | 2              |
|      | - Rubber channel nitrile .....         | 10008   | 1              |
|      | - Filter .....                         | 10092   | 1              |
| 10   | Housing .....                          |         |                |
|      | Bearing 15x8 .....                     |         | 2              |
| 11   | Drive shaft .....                      | 10022   | 1              |
|      | - O-ring ø15x2 NBR .....               |         | 1              |
|      | - O-ring ø12x1.5 NBR .....             |         | 1              |
| 12   | Drive* .....                           |         | 1              |
|      | - Spring circlip .....                 | 10079   | 1              |
| 13   | Screw MFS 5x8 SS .....                 |         | 4              |
| 14   | Tightening cover .....                 | 10016   | 1              |
| 15   | Gasket nitrile .....                   | 10017   | 1              |
| 16   | Safety valve spring .....              | 10021   | 1              |
| 17   | Safety valve plug nitrile .....        | 10020   | 1              |
| 18   | Plug 1/4" S2610-1/4 .....              |         | 1              |
| 19   | Blind plug NPT 1/2" .....              | 10026   | 1              |
|      | Blind plug M20x1.5 .....               | 20032   | 1              |
|      | Blind plug PG 13.5 .....               | 20033   | 1              |
|      | - O-ring ø 18.5x1.5 NBR .....          |         | 1              |
| 20   | O-ring ø 34x2 NBR .....                |         | 1              |
| 21   | Pilot valve W1 .....                   | 10039   | 1              |
|      | Pilot valve W2 .....                   | 10071   | 1              |
|      | Pilot valve W3 (Standard) .....        | 10090   | 1              |
|      | - Screw MCS 5x25-5 SS .....            |         | 1              |
|      | - O-ring ø 5x1.5 NBR ** .....          |         | 5              |
|      | - Valve gasket .....                   | 10093   | 1              |
| 22   | Gauge plug .....                       | 10048   | 4              |
| 23   | Zero plug nitrile .....                | 10005   | 1              |
| 24   | Balance arm .....                      | 10013   | 1              |
| 25   | Retainer spring .....                  | 10075   | 1              |
| 26   | Guide pin .....                        | 10015   | 1              |
| 27   | Guided arm complete .....              | 20029   | 1              |
|      | - Ball bearing .....                   |         | 1              |
|      | - Zero screw .....                     | 10091   | 1              |
|      | - Screw MCS 4x10 SS .....              |         | 1              |
|      | - Bearing 8x8 .....                    |         | 2              |
| 28   | Stop washer .....                      | 10014   | 1              |
|      | - Screw MCS 4x8-4 SS .....             |         | 1              |
| 29   | Feedback spring assembly .....         | 20034   | 1              |
| 30   | Cam C1 (Std) * .....                   | 10024   | 1              |
| 31   | Cam nut .....                          | 10023   | 1              |
|      | - Screw MCS 4x8 SS .....               |         | 1              |
| 32   | Indicator Arrow .....                  | 10064   | 1              |
|      | - Circlip SGA 15 SS .....              |         | 1              |
| 33   | O-ring front cover nitrile .....       | 10072   | 1              |
| 34   | Front cover assembly .....             | 20031   | 1              |
|      | - O-ring front cover nitrile .....     | 10072   | 1              |
|      | - Front label 0-90-0-(Standard)* ..... | 20006   | 1              |
|      | - Screw MCS 5x20-5 SS .....            |         | 4              |
|      | - Mylar washer .....                   | 10095   | 2              |
| 35   | Indicator gasket nitrile .....         | 10036   | 1              |
| 36   | Indicator cover flat .....             | 10000   | 1              |
| 37   | Indicator, raised .....                | 10063   | 1              |
|      | - Circlip SGA 15 SS .....              |         | 1              |
| 38   | Indicator cover Raised .....           | 10043   | 1              |
| 39   | Screw MCS 4x16 SS .....                |         | 2              |
| 40   | Screw MCS 4x10 SS .....                |         | 2              |
| 41   | Screw MCS 3x10 SS .....                |         | 1              |
| 42   | Screw MSCS 4x8 SS .....                |         | 2              |
| 43   | Grounding clamp .....                  | 10067   | 1              |

\*Cams with other ranges, Front labels with other scale readings and Drive suitable for the most frequently used actuator types, are available.

\*\*Only Spool valves marked: 10039-R0-WA1, 10071-R0-WA2, 10071-R1-WA2, 10090-R0-WA3 and 10090-R1-WA3